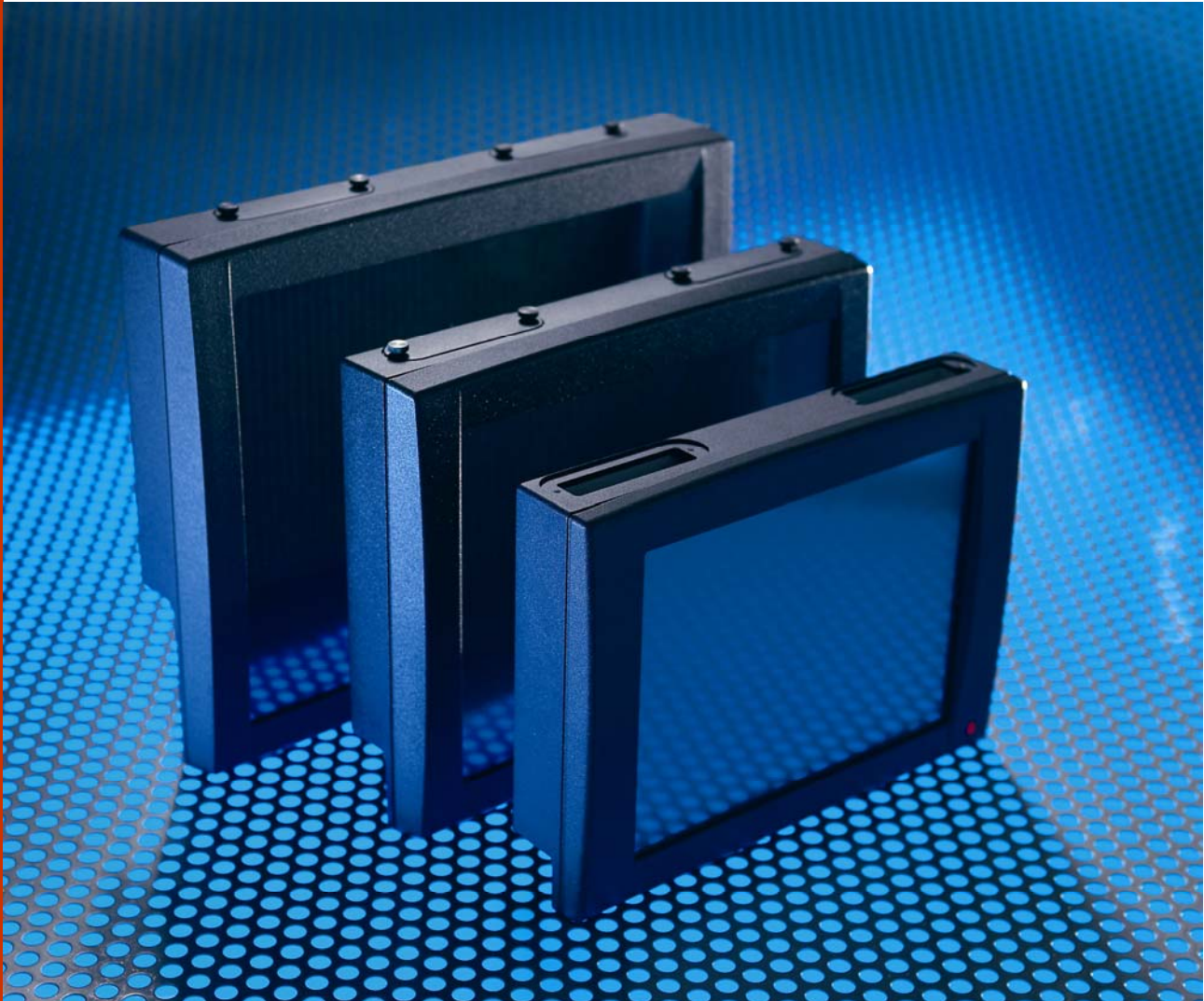


JLT RUGGED FIXED MOUNT PCs



Rugged Computers for extreme environments

JLT Mobile Computers develops and produces the ultimate rugged fixed-mount computers.

Wherever a PC is required to control operations, machinery or display vital information there is a JLT computer that will do the job.

Used in warehouses, construction, military, marine, mining and drilling, agriculture, forestry, public safety, and other industrial and logistics markets JLT computers are designed and built to survive any conditions.

From cold stores to desert heat, high speed open boats to military off-road vehicles. In fact

anywhere you need a PC that has to keep on working.

All our claims have been independently verified so you can have total confidence in the product. And when you install a JLT computer you are joining a global community of demanding users that increased in 2005 by more than 10,000 computers.

Yet you get this unsurpassed level of quality and performance at a remarkably affordable price.





JLTs newest generation of computers are by far the best for any fixed position or in- or on-vehicle use. They are built to withstand rides over the roughest terrains under extreme conditions. With features like custom built waterproof IP67 housing,

light weight and slim size, these rugged and ergonomically designed all-in-one computer will power your systems for years. And a choice of 3 models offers the maximum versatility. **JLT10021** with 10.4" screen, **JLT12041** with 12.1" screen and **JLT15021** with 15.1" screen.

TECHNICAL SPECIFICATIONS

Processors (model dependent)

VIA 400 MHz
VIA 1GHz
Intel Celeron 600 MHz
Intel Pentium M 1.4 GHz

RAM memory

256 MB to 1GB

Displays (model dependent)

10.4" , 12.1" and 15.1"
SVGA (800 x600 Pixels) or XGA (1024 x 768 Pixels)
Colour Active Matrix TFT 256K colours
120 degree viewing angle
0-100 % dimmable (64 levels)

Luminance

From 400 NITS to 1000 NITS model dependent

User Interface

High Resolution resistive touch screen (optional)
Rugged DB9 Keyboard/Mouse port
On/Off switch and manual dimmer control

Sound / Graphics

AC97 and Soundblaster Pro compatible
Intel Extreme Graphics 2, Up to 32 MB (uses RAM-memory)
Amplified Audio out

Storage

Card slot for ATA/IDE (Flash or rotating)
Hard Drive 40 GB 2.5" ATA/IDE Automotive
Flash Disk 1 GB to 8 GB, 2.5" ATA/IDE
Compact Flash for ATA/IDE

Interfaces

CARDBUS PCMCIA 32-bit, 2 type II or 1 type III
2 Serial ports RS 232C, COM 1-2, up to 115 Kbit/s (4 ports optional)
2 USB
1 FireWire
1 Ethernet 10/100-Tp, RJ45
1 Mouse/Keyboard port DB9 (PS/2 adaptable)
1 Buzzer, Mic, CD in and Line out Stereo port DB9

Power supply

9-36 VDC
5 W standby, 25W—35W operating and Max 55 W

RF options

Cardbus, PCMCIA compatible (radio independent)
WLAN, GSM, GPRS, UMTS, Bluetooth, GPS

Operating Systems

Windows XP Pro Windows XP Embedded
Linux / DOS

Physical characteristics

JLT10021
280mm (w) x 205mm (h) x 55mm (d) 3.1Kg

JLT12041
305mm (w) x 240mm (h) x 61mm (d) 3.7 kg

JLT15021
358mm (w) x 286mm (h) x 61mm (d) 5.3Kg
Enclosure: Aluminium, powder coated

Environment

Operating Temperature: -30 C to 50 C (-20 C when started with Hard Disk)
Storage Temperature -30 C to 75 C
Jet of water: IP-65 (standard), IP67 (optional)
Humidity: 10 - 95% RH, non-condensing
Vibration: 5 - 500 Hz/4.5 g RMS 3 hours XYZ (non-rotating disk)
Shock: 30 g for 11 ms (non-rotating disk)

Regulatory Approvals

Din 40050 Part 9 IEC 529
Safety: UL: UL94, Class VO
FCC: Part 15 Class B
International Safety: CE Vehicle, FCC light industry
Electrical: ISO7632-1, reverse polarity, dual battery
EMC Susceptibility: ISO7637-1, -2, EN61000-4-2
EMC Emissions: EN55022

Accessories

Mounting solutions	Mini-keyboards
AC/DC adaptors	Rugged keyboards
Industrial DC/DC	Virtual on-screen keyboard
Cables and adaptors	Radios and GPS
Antennas, domes	

Warranty

1 year standard
2 or 3 year option

