

The Industrial PDA

HIGHLIGHTS

• MAKES WORK EASIER

Datalogic JET™, the powerful Datalogic PDA with the most advanced technologies, provides the most suitable power levels for capturing, computing and communicating data faster and easier.

• FULL CONNECTIVITY

The Datalogic JET™ offers superior wireless simultaneous communication capabilities (WPAN, WLAN, WWAN and GPS technology) in the same and ergonomic form factor.

• IDEAL FOR ANY APPLICATION

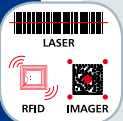
The Datalogic JET™ presents mobile professionals with the most relevant features needed to operate in demanding environments: reliability, ruggedness, drop resistance, long lasting batteries, flexible communication and efficient data capture. In addition to the highest robustness and reliability in its class, other key features of the Datalogic JET™ include fully integrated automatic data capture (bar codes, RFID tags and images).

• A COMPLETE SOLUTION

Thanks to a set of accessories, such as a vehicle cradle (standard and loud speaker), cigarette lighter power adapter and dashboard mounting kit, combined with state-of-the-art technology inside the PDA, the Datalogic JET™ is the right answer for all data management needs on the move.

• INTEROPERABILITY

It offers a multi-operating system option: Windows CE 5.0 that guarantees maximum flexibility and Windows Mobile 6 that offers complete compatibility.



FEATURES

- Microsoft Windows CE 5.0 or Microsoft Windows Mobile 6
- Intel PXA270
- Laser, Imager and Laser+RFID HF-ISO 13.56 MHz data capture options
- 1.5 m (5 ft) drop resistance
- IP64 protection class
- User-accessible memory slot
- Bluetooth®, 802.11 b/g CCX V4 certified, GSM/GPRS, GPS technology simultaneous communication options
- Large high visibility QVGA color graphic display with touch screen
- Ergonomic, lightweight and robust
- Wavelink Powered™ with pre-installed and pre-licensed Wavelink® Avalanche™

APPLICATIONS

- Field Force Automation
- Parcel pick-up & delivery
- Route accounting
- Warehouse management: inventory/picking/shipping/receiving
- Shelf replenishment/Price management
- Healthcare administration

Specifications

PHYSICAL CHARACTERISTICS

DIMENSIONS	176 x 90 x 28 mm (6.9 x 3.5 x 1.1 in) minimum
WEIGHT	424 to 463 g (14.9 to 16.3 oz) depending on model (incl. battery)
DISPLAY	Transflective TFT daylight readable color display, 240 x 320 pixels, 3.5 in. (89 mm) diagonal, 65 K colors, backlight, touch screen
KEYBOARD	27 rubber keys, triple scan key, backlit keyboard standard
OPERATING TEMPERATURE	-10 °C to 50 °C (14 °F to 122 °F)
STORAGE TEMPERATURE	-20 °C to 70 °C (-4 °F to 158 °F)
DROP RESISTANCE	Withstands drops from 1.5 m (5 ft) onto concrete
ENVIRONMENTAL SEALING	IP64 standard for water and dust resistance

SYSTEM

OPERATING SYSTEM	Microsoft Windows CE 5.0 / Microsoft Windows Mobile 6
MICROPROCESSOR	Intel® XScale PXA 270 @ 520 MHz
SYSTEM RAM MEMORY	128 MB
SYSTEM FLASH MEMORY	128 MB (including Backup directory for user data & programs permanent storage)
EXPANSION SLOTS	Mini Secure Digital (user accessible)
REAL-TIME CLOCK	Time and date stamping under software control
POWER SUPPLY	Removable battery pack with rechargeable Li-Ion batteries; 7.4 V 1070/1800 mAh (7.9/13.3 Watt hours); Local connection for fast battery charging

COMMUNICATIONS

INTERFACES	Electrical: integrated RS232 up to 115.2 kbps Kbps via connector or single cradle USB: integrated full speed USB (USB 1.1) via connector or single cradle Ethernet: via multiple cradle
PERSONAL AREA NETWORK (WPAN)	IEEE 802.15 Bluetooth® Class 2, Version 1.2; integrated module
LOCAL AREA NETWORK (WLAN)	IEEE 802.11b/g CCX V4 certified; integrated module
WIDE AREA NETWORK (WWAN)	Frequency range: Country dependent, typically 2.4 - 2.5 GHz GSM/GPRS (900/1800/1900 MHz); user-accessible SIM socket for GSM/GPRS; integrated module
GLOBAL POSITION SYSTEM (GPS)	NMEA, SIRF Star III, 4.8 kbps; integrated module

READING OPTIONS

LASER CHARACTERISTICS

SCANNING RATE	35 ± 5 scans/sec; 104 ± 12 scans/sec(*)
MINIMUM RESOLUTION	0.127 mm (5 mils)
DEPTH OF FIELD	3 to 70 cm (1.2 to 27.6 in); 3.5 to 85 cm (1.4 to 33.5 in) (*), depending on bar code density
SCAN ANGLE	42° ± 2°; 47° ± 2°(*)
BAR CODES	GS1 Databar, EAN/UPC, Code 39, 2/5 Codes, Plessey, Codabar, Code 128, EAN128, MSI, Code 93, Code 11

RFID CHARACTERISTICS

OPERATING FREQUENCY	13.56 MHz
RFID TAGS	EMS HMS Series, EMS LRP ISO15693 Series, Philips Mifare Classic 1k (read/write block only), Philips Mifare Classic 4k (read/write block only), Philips Mifare Ultralight, Texas Tag-It HF-I ISO15693, Infineon ISO15693, I-CODE SLI ISO15693
OPERATING RANGE	Up to 10 cm

IMAGER CHARACTERISTICS

AIMING	Visible laser diode @ 650 nm
MAX. RESOLUTION	Linear: 5 mils; datamatrix: 6.6 mils
READING FIELD	21.8" (H) x 16.7" (V)
PRINT CONTRAST VALUE	PCS=23% (min.)
READING ANGLE	Skew ±40°; Pitch ±35°; Tilt 360°
SENSOR	640 X 480 element, 2D CMOS array
LASER CLASSIFICATION	Class 2 (IEC 825-1 and CDRH)
BAR CODES	1D: Interleaved 2 of 5, Code 39, Code 128, EAN 128, Code 93, UPC/EAN/JAN, Codabar 2D: PDF417, DataMatrix, QR, RSS codes POSTAL CODES: POSTNET, PLANET, Japan Post, Australia Post, KIX Code, Royal Mail Code (RM4SCC)
IMAGE & SIGNATURE CAPTURE	640 x 480 VGA (8 bit gray scale) 320 x 240 CIF (8 bit gray scale)

(*) DLBJET xxx-9xx-xxx models

SOFTWARE

DEVELOPMENT

Windows CE/Mobile SDK™
DL Mobility Developer Assistant™
MCL-Collection™
Java Virtual Machine (Crème)

CONFIGURATION & MAINTENANCE

Wavelink® Avalanche™
Datalogic Firmware Utility
Datalogic Desktop Utility
Datalogic Configuration Utility



Caution:
Laser Radiation -
do not stare into
beam

TERMINAL EMULATION

Wavelink® Terminal Emulation

UTILITIES

Wavelink® Remote Control
Wavelink® TermProxy
Wavelink® Speakeasy
Vo-CE™

Accessories



Single Cradle and
Multiple Battery Charger



Vehicle Cradle



Multiple Cradle (Ethernet)

Please refer to user manual available at www.mobile.datalogic.com/manuals for information on product use limitation.
For more information see: www.mobile.datalogic.com/datalogicJet

Not available in the U.S.